

# HEMP SHAPES™ STRIPES



## Product Overview

**Hemp Shapes™ STRIPES** are made by taking 'post-industrial' recycled HEMP fiber and mixing with Low-VOC pigments and adhesives prior to heat pressing into a rigid pane with embedded ridges running the length of the panel. The Hemp Shapes panel will provide acoustic reflection, diffusion and sound absorption, while providing a unique visual to any interior décor application.

## Sustainable Attributes

- Hemp is Rapidly Renewable fiber, with one of the quickest growth cycles of any natural fiber used in the development of construction materials (typically harvested 70-90 days after planting; and multiple plantings occur each year).
- Hemp is the most efficient plant for Carbon Sequestration (ie: pulling carbon from the atmosphere).
- Hemp does not require the use of pesticides during its' growth (due to its natural resistance to pests and weeds).
- Hemp is completely biodegradable and provides nutrients to the soil during the harvesting process (ie: there is a benefit to farmers to plant hemp as it enhances the soil morphology).
- All parts of the Hemp plant are used for different functions leaving no by product waste.

## PANEL SIZE

Panel Length: 27-1/6"  
Panel Width: 15-1/3"  
Sq. Ft. per panel: 2.96

## BOX QUANTITY

Panels Per Box: 10  
Sq. ft. Per Box: 29

## Colors

### Rustic Colors



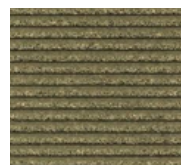
White



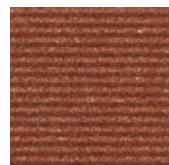
Natural



Thatch



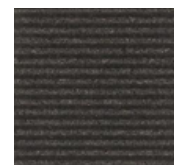
Thatch



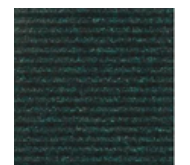
White



Natural



Thatch



Thatch



White



Natural



## Sustainable Attributes

- Made with a minimal amount of 'cement', but enough to visually mimic a solid concrete slab.
- Low carbon allocation
- Lightweight (minimal material for maximum 'visual' return)
- Contains NO Toxins
- Is VOC-free
- Coating (ie: finish) incorporated carbon effluent from other manufacturing operations
- Sustainable supply chain

## Environmental Certification

- Declare – Red List free (third party verified)
- ISO 14001 Certified Environmental Management
- Health Product Dec

## Green Building Certification

Sustainable Materials products meet criteria for WELL, LEED, Green Star, and BREEAM building rating systems, helping you achieve certification for your project. For support and guidance on available rating system points please visit [www.SustainableMaterials.com](http://www.SustainableMaterials.com), or speak with your Sustainable Materials account manager.

## Product Testing Specifications

**Fire-rating:** Class A (per ASTM E84); Class B1 (per DIN 4102-1)

**Resistance to Fading:** <6 (per DIN 15187)

**Abrasion Resistance:** Class 2A (per DIN 68861-2)

**Scratch Resistance:** Class 4E (per DIN 68861-4)

**Thermal Resistance:** 0.46 m²C/W

**Pattern repeat:** No pattern repeat (non-woven).